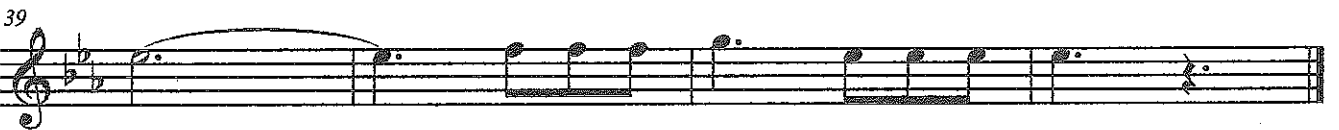
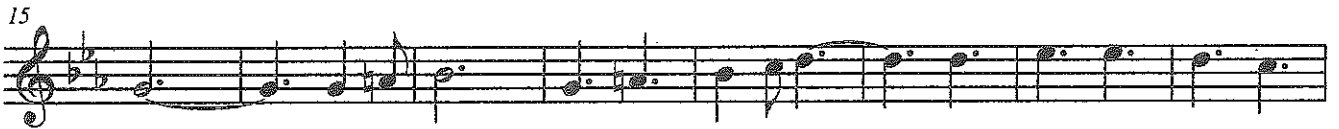
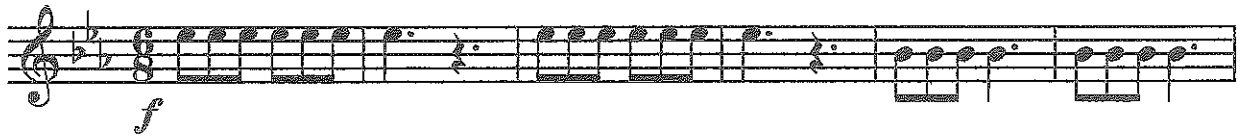


FRASER FIGHT SONG

Bells, Guitar and Piano.

Bells ♩ = 120



Fraser Fight Song

G Dunn

Snare Drum

The musical score for the Snare Drum part of the Fraser Fight Song is written on a single staff with a treble clef and a 2/4 time signature. The piece consists of 44 measures, divided into seven systems of eight measures each. The notation includes various rhythmic patterns such as eighth and sixteenth notes, often beamed together, and rests. Dynamic markings are used throughout: *f* (forte) at the beginning, *mf* (mezzo-forte) at measure 8, *p* (piano) at measure 16, and *fff* (fortissimo) at measure 41. Accents (>) are placed above many notes to indicate emphasis. The rhythm is characterized by a driving, repetitive pattern of eighth and sixteenth notes, typical of a march or fight song. The piece concludes with a final note on the fifth line of the staff.

8

15

21

26

33

41

f *mf* *p* *fff*

Fraser Fight Song

G Dunn

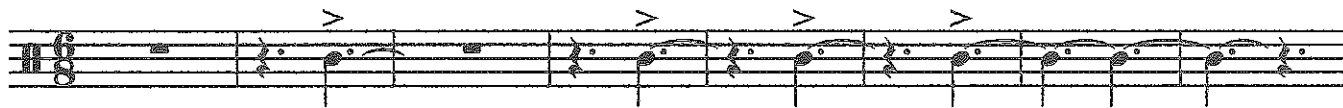
Quint Toms

The musical score for Quint Toms is written on six staves. Each staff begins with a treble clef and a key signature of one sharp (F#). The music is primarily composed of eighth and sixteenth notes, often beamed together. Above the notes are various dynamic markings, including accents (>) and a piano marking (*p*) at the start of the third staff. Below the notes is rhythmic notation using 'r' for right and 'l' for left, indicating the hand used for each stroke. The score is divided into measures, with measure numbers 7, 14, 21, 27, and 35 marked at the beginning of their respective staves. The final staff ends with a double bar line and a repeat sign.

Fraser Fight Song

Cymbals

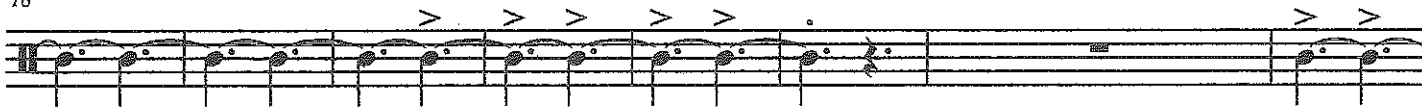
G Dunn



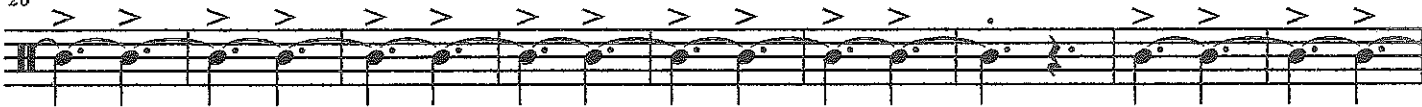
9



18



26



35



Fraser Fight Song

Bass Drums

G Dunn

The musical score for Bass Drums is written on a single staff with a treble clef and a key signature of one flat (B-flat). The piece is in 2/4 time. The notation uses a variety of rhythmic patterns, including eighth and sixteenth notes, often beamed together. Many notes are marked with an accent (>). The score is divided into measures, with measure numbers 8, 17, 24, 32, and 41 indicated at the start of their respective lines. The notation includes stems with dots, indicating specific drum parts, and some measures feature complex rhythmic figures with multiple notes per beat. The piece concludes with a final measure at measure 44, marked with a double bar line and a fermata.