

Flute

# Let's Go Blue

$\text{♩} = 120$   
3x

The first staff of music for the Flute part is written in treble clef with a key signature of two flats (Bb and Eb). It begins with a tempo marking of quarter note = 120 and a handwritten '3x' above the first measure. The melody consists of eighth and quarter notes with some rests.

6

The second staff of music for the Flute part continues the melody from the first staff, starting with a measure rest marked '6'. It concludes with a double bar line.

Clarinet in Bb

# Let's Go Blue

$\text{♩} = 120$   
3x

The first staff of music for the Clarinet in Bb part is written in treble clef with a key signature of two flats. It begins with a tempo marking of quarter note = 120 and a handwritten '3x' above the first measure. The melody features eighth and quarter notes with some rests.

6

The second staff of music for the Clarinet in Bb part continues the melody from the first staff, starting with a measure rest marked '6'. It concludes with a double bar line.

Bass Clarinet

# Let's Go Blue

$\text{♩} = 120$   
3x

The first staff of music for the Bass Clarinet part is written in treble clef with a key signature of two flats. It begins with a tempo marking of quarter note = 120 and a handwritten '3x' above the first measure. The melody consists of eighth and quarter notes with some rests.

6

The second staff of music for the Bass Clarinet part continues the melody from the first staff, starting with a measure rest marked '6'. It concludes with a double bar line.

Alto Sax

# Let's Go Blue

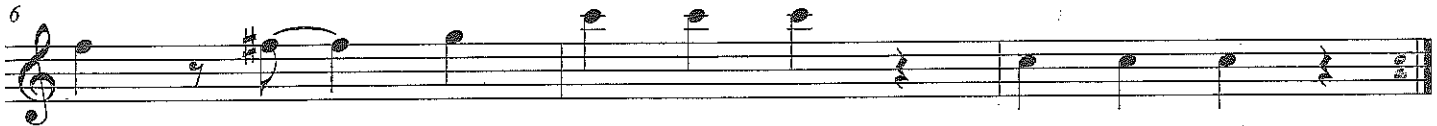
♩ = 120 3x



Tenor Sax

# Let's Go Blue

♩ = 120 3x



Baritone Sax

# Let's Go Blue

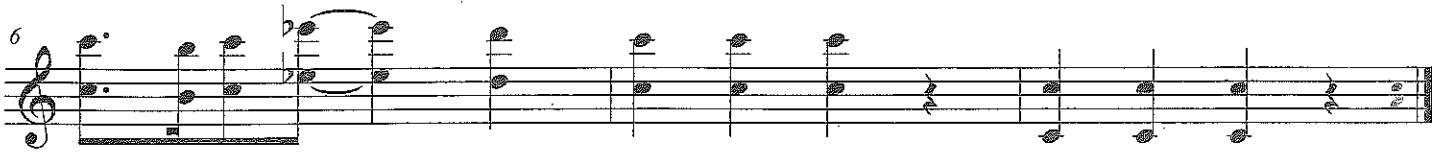
♩ = 120 3x



Trumpet in B $\flat$

# Let's Go Blue

$\text{♩} = 120$  3X



# Let's Go Blue

Horn in F

3X



Trombone

# Let's Go Blue

$\text{♩} = 120$  3X



Baritone (T.C.)

# Let's Go Blue

♩ = 120 3X

Musical notation for the first staff of the Baritone (T.C.) part. It is written in treble clef with a key signature of one flat (B-flat) and a common time signature (C). The tempo is marked as ♩ = 120. The piece is marked with a handwritten '3X' above the staff. The notation consists of a series of eighth and quarter notes with rests, typical of a blues style.

6

Musical notation for the second staff of the Baritone (T.C.) part, starting at measure 6. It continues the melodic line from the first staff, ending with a double bar line and repeat dots.

Baritone (B.C.)

# Let's Go Blue

♩ = 120 3X

Musical notation for the first staff of the Baritone (B.C.) part. It is written in bass clef with a key signature of one flat (B-flat) and a common time signature (C). The tempo is marked as ♩ = 120. The piece is marked with a handwritten '3X' above the staff. The notation consists of a series of eighth and quarter notes with rests.

6

Musical notation for the second staff of the Baritone (B.C.) part, starting at measure 6. It continues the melodic line from the first staff, ending with a double bar line and repeat dots.

Tuba

# Let's Go Blue

♩ = 120 3X

Musical notation for the first staff of the Tuba part. It is written in bass clef with a key signature of one flat (B-flat) and a common time signature (C). The tempo is marked as ♩ = 120. The piece is marked with a handwritten '3X' above the staff. The notation consists of a series of eighth and quarter notes with rests.

6

Musical notation for the second staff of the Tuba part, starting at measure 6. It continues the melodic line from the first staff, ending with a double bar line and repeat dots.

# Let's Go Blue

Percussion

3X



5

